

POWER PLANT (TBD) 1905 St. Patrick St. Historic Rehab

Belle City Square sits on the grounds of the historic Horlick Factory, uniting the history of Racine with a modern reimagined vision. Through both historic redevelopment and new construction, the project brings hundreds of elevated apartment units and a mix of office and retail commercial space to the area. Ideal for childcare, event space, recreation/rock climbing gym, and/or storage.

POWER PLANT



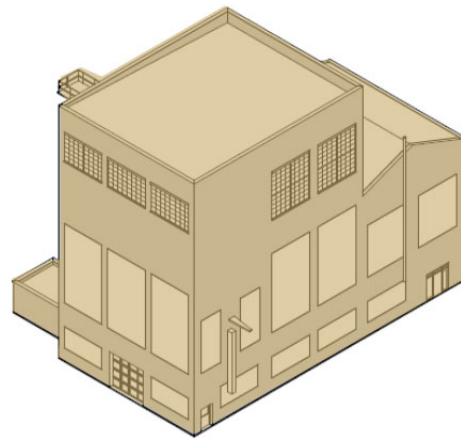
5,000 SF OF COMMERCIAL
SPACE WITH AN ADDITIONAL
9,000 SF AVAILABLE

- Storage
- Recreation / Rock Climbing Gym
- Event Space
- Child Care

1st Floor: 5,000 SF

2nd Floor: 4,500 SF

3rd Floor: 4,500 SF



Power Plant 5,000 SF with an additional 9,000 SF available

- 1st Floor – 5,000 SF
- 2nd Floor – 4,500 SF
- 3rd Floor – 4,500 SF