

MERCANTILE (TBD) 2202 Northwestern Ave. Event / Commercial / Historic Rehab

Belle City Square sits on the grounds of the historic Horlick Factory, uniting the history of Racine with a modern reimagined vision. Through both historic redevelopment and new construction, the project brings hundreds of elevated apartment units and a mix of office and retail commercial space to the area. Ideal for a restaurant, music venue, event space, and/or taproom

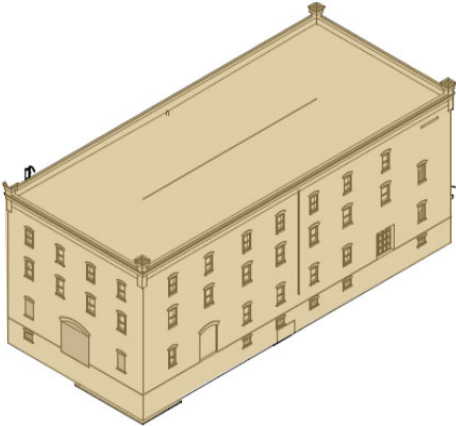
MERCANTILE



15,510 SF (+ BASEMENT) OF COMMERCIAL SPACE

- Restaurant Space
- Music Venue
- Event Space
- Taproom

1st Floor: 5,170 SF
2nd Floor: 5,170 SF
3rd Floor: 5,170 SF
Basement: 4,931 SF



Mercantile 15,510 sf (+ Basement)

- 1st Floor - 5,170 SF
- 2nd Floor - 5,170 SF
- 3rd Floor - 5,170 SF
- Basement - 4,931