



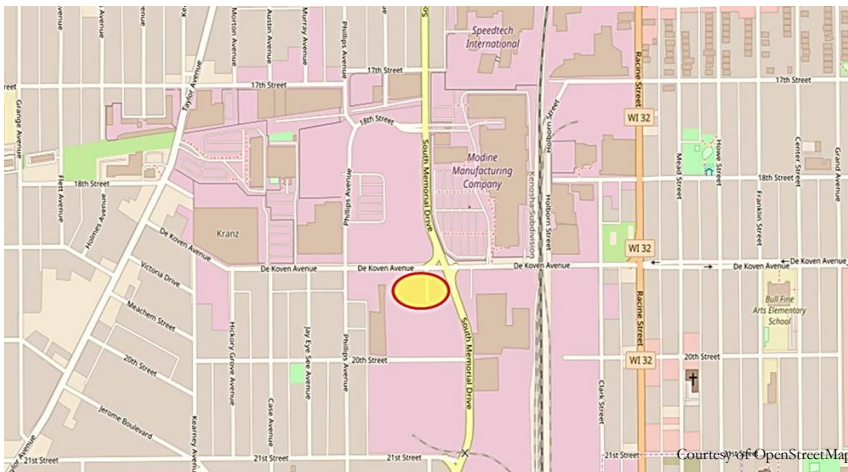
REDEVELOPMENT OPPORTUNITY



1701 DEKOVEN AVENUE | RACINE | WI



Courtesy of Google



Courtesy of OpenStreetMap

PROPERTY DATA

- ⇒ Lot Size: 1.13 ACRES
- ⇒ Finished Area: VACANT
- ⇒ Zoning: I2
- ⇒ TIF District: 10
- ⇒ Design District: Uptown
- ⇒ Use: Commercial/Industrial
- ⇒ Listing Price: RDA Owned

Development Goals- Versatile, high-visibility 1.134 acre parcel in Racine’s Southside Industrial Park. Cleared for commercial or industrial redevelopment, this Uptown property has easy access to Hwy32, Hwy20, and Hwy11, and is located on active public transit and truck routes.



**CONTACT: AMY CONNOLLY, RDA EXECUTIVE DIRECTOR
262.636.9151**

www.buildupRACINE.ORG