



REDEVELOPMENT OPPORTUNITY

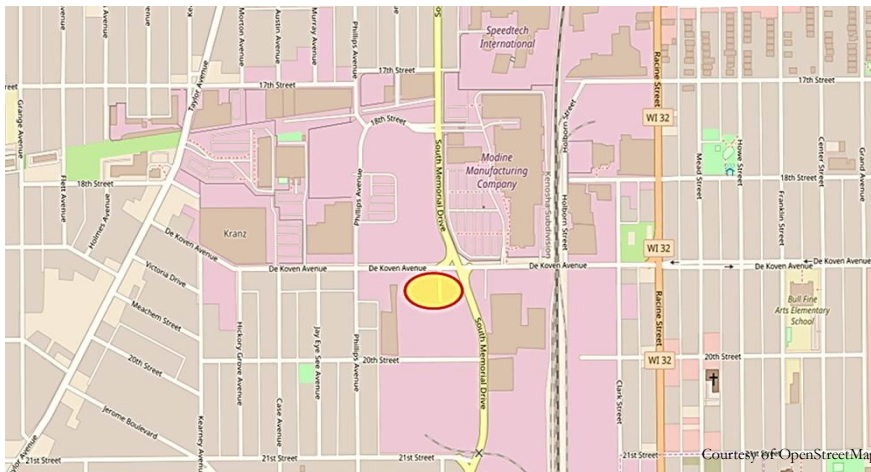


1623 DEKOVEN AVENUE | RACINE | WI



PROPERTY DATA

- ⇒ Lot Size: 0.49 ACRES
- ⇒ Finished Area: VACANT
- ⇒ Zoning: I2
- ⇒ TIF District: 10
- ⇒ Design District: Uptown
- ⇒ Use: Commercial/Industrial
- ⇒ Listing Price: RDA Owned



Development Goals- Versatile, high-visibility 0.49 acre parcel in Racine’s Southside Industrial Park. Cleared for commercial or industrial redevelopment, this Uptown property has easy access to Hwy32, Hwy20, and Hwy11, and is located on active public transit and truck routes.



**CONTACT: AMY CONNOLLY, RDA EXECUTIVE DIRECTOR
262.636.9151**

www.buildupRACINE.ORG