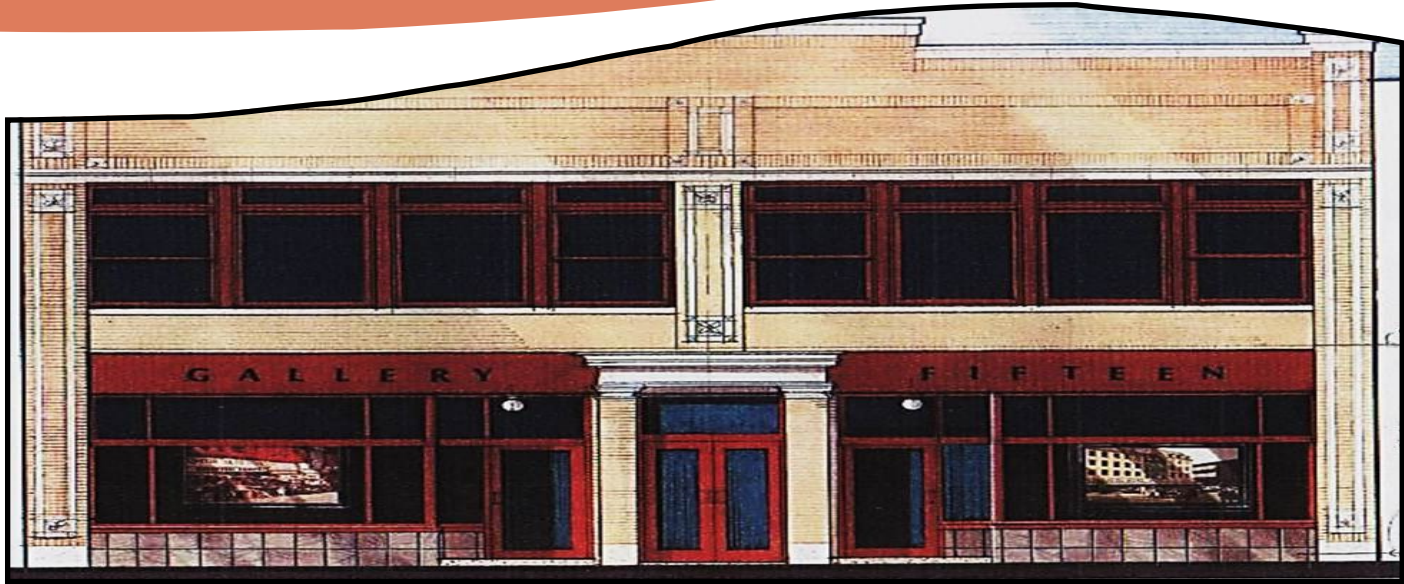




REDEVELOPMENT OPPORTUNITY



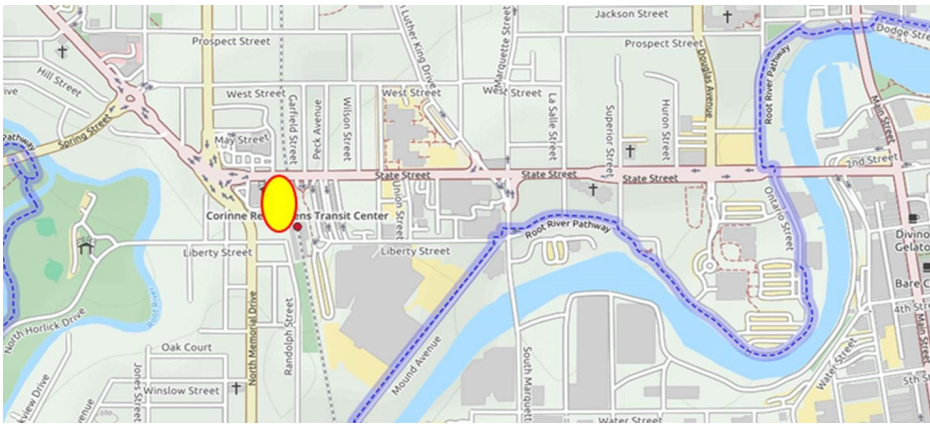
UPTOWN COMMONS

1511 WASHINGTON AVE | RACINE | WI



PROPERTY DATA

- ⇒ Lot Size: 0.14 Acres
- ⇒ Finished Area: 5,946 sq. ft.
- ⇒ Year Built: 1927
- ⇒ Zoning: B2
- ⇒ Design District: Uptown
- ⇒ Use: Mixed-use
- ⇒ Listing Price: RDA Owned



Development Goals- Redevelopment opportunity in the Uptown Retail Corridor. Mixed-use property located near corporate headquarters, business incubators, restaurants and antique shops. High-visibility property located on State Hwy 20, with regular transit service, minutes from lake-front.

**CONTACT: AMY CONNOLLY, RDA EXECUTIVE DIRECTOR
262.636.9151**



www.buildupRACINE.ORG