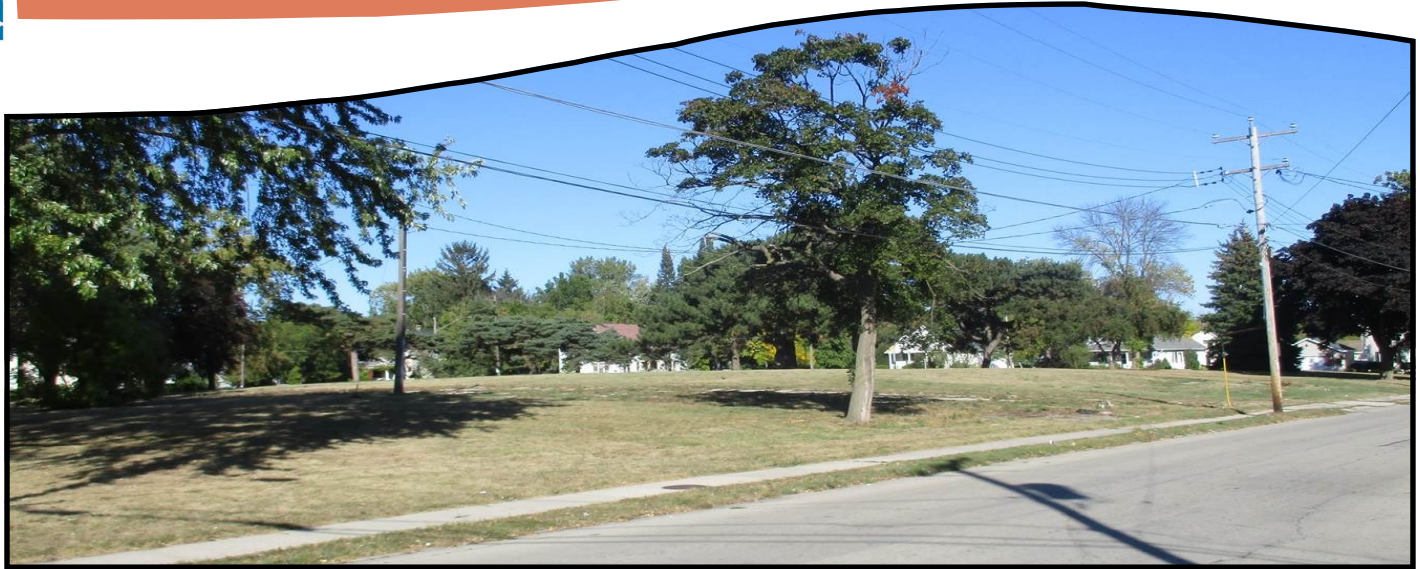
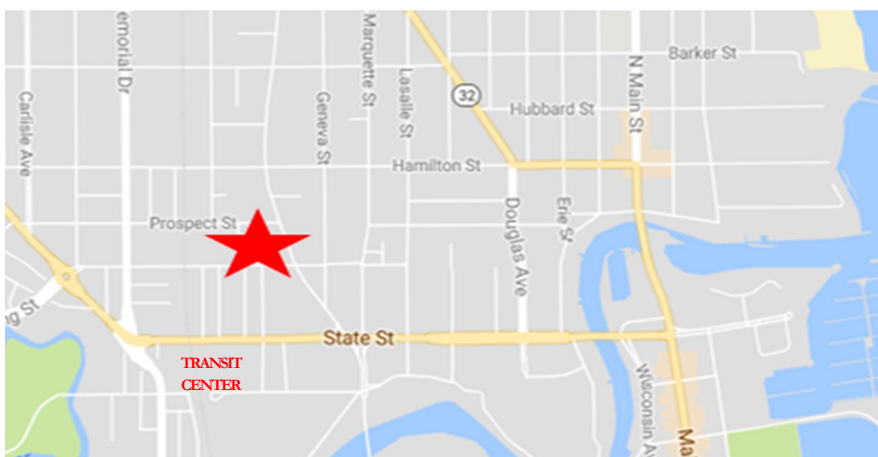
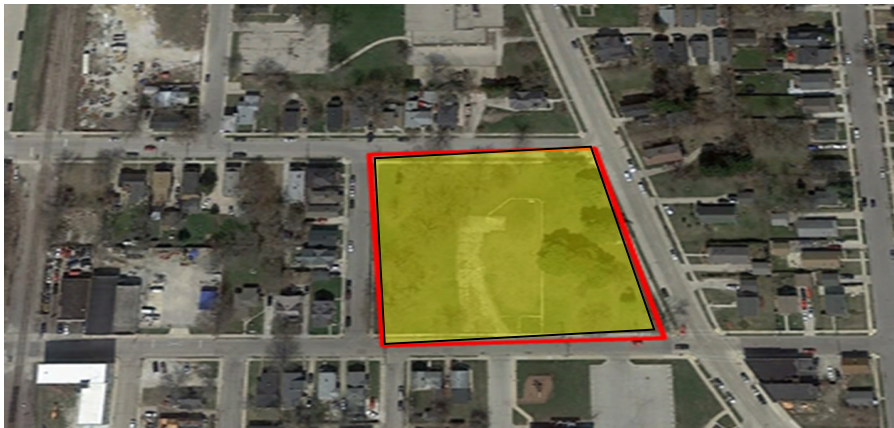




REDEVELOPMENT OPPORTUNITY



1014 DR. MARTIN LUTHER KING JR. | RACINE | WI



PROPERTY DATA

- ⇒ Lot Size 2.314 ACRES
- ⇒ Finished Area: VACANT
- ⇒ Zoning: R3
- ⇒ TIF District : 15
- ⇒ Design District: STATE St.
- ⇒ Use: RESIDENTIAL
- ⇒ Building Height : 2.5 stories
- ⇒ Listing Price: CITY OWNED

Development Goals- Transit-oriented development opportunity. Large vacant property near the State Street retail corridor and multi-modal Transit Center. Targeted for market-rate, transit-oriented residential development.

**CONTACT: AMY CONNOLLY, RDA EXECUTIVE DIRECTOR
262.636.9151**

WWW.BUILDUPRACINE.ORG

